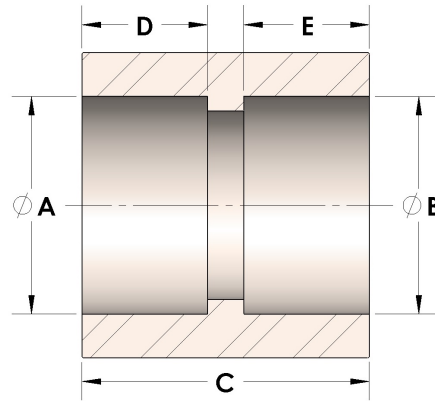


Product Category

100-1-0-SS316L

Part Description

Direct Socketweld/Braze Coupling (Pipe)



DIMENSIONS

| | |
|---|-------|
| A | 0.555 |
| B | 0.42 |
| C | 1.19 |
| D | 0.380 |
| E | 0.38 |

GENERAL

| | |
|------------------|---|
| Pressure Rating | 6000 PSI |
| Fitting Material | 316/L Stainless Steel, ASTM A276, UNS S31600/03 |