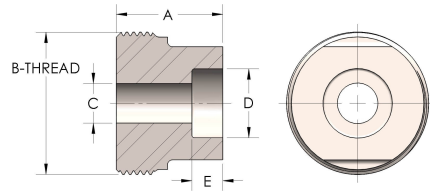


**Product Category**  
**Part Description**

48T-4-CUNI  
Socketweld Tube



## DIMENSIONS

<b>A</b>	1.310
<b>B-THREAD</b>	2.000" - 12UN
<b>C</b>	0.63
<b>D</b>	1.002
<b>E</b>	0.56

## GENERAL

<b>Pressure Rating</b>	4500 PSI
<b>Threadpiece Material</b>	Copper Nickel 70/30, MIL-C--15726F, UNS C71500