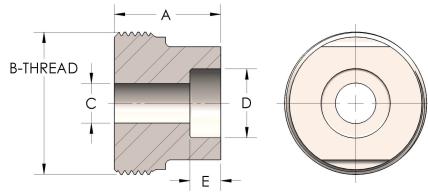


Product Category

48T-8-CUNI

Part Description

Socketweld Tube



DIMENSIONS

| | |
|-----------------|---------------|
| A | 0.150 |
| B-THREAD | 3.750" - 12UN |
| C | 1.75 |
| D | 2.502 |
| E | 0.88 |

GENERAL

| | |
|-----------------------------|--|
| Pressure Rating | 2500 PSI |
| Threadpiece Material | Copper Nickel 70/30, MIL-C--15726F, UNS C71500 |