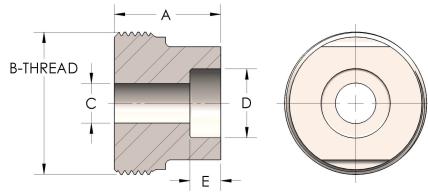


Product Category

48T-9-S

Part Description

Socketweld Tube



## DIMENSIONS

<b>A</b>	2.560
<b>B-THREAD</b>	4.500" - 12UN
<b>C</b>	2.13
<b>D</b>	3.002
<b>E</b>	1.00

## GENERAL

<b>Pressure Rating</b>	4500 PSI
<b>Threadpiece Material</b>	Carbon Steel, ASTM A108