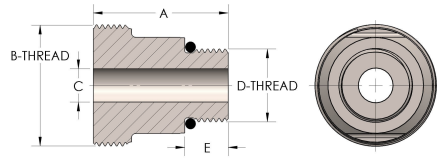


Product Category

59T-3-S

Part Description

Male Straight Thread



## DIMENSIONS

<b>A</b>	1.940
<b>B-THREAD</b>	1.750" - 12UN
<b>C</b>	0.50
<b>D-THREAD</b>	1.063" - 12UN
<b>E</b>	0.63

## GENERAL

<b>Pressure Rating</b>	6000 PSI
<b>Threadpiece Material</b>	Carbon Steel, ASTM A108