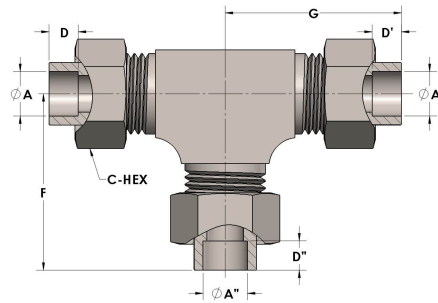


Product Category

H810-10-10-08-S

Part Description

Socketweld/braze Tube Tee Assembly



## DIMENSIONS

A	0.630
A'	0.630
A''	0.500
C-HEX	1.13
D	0.380
D'	0.380
D''	0.310
F	2.06
G	2.06



## GENERAL

<b>Pressure Rating</b>	4500 PSI
<b>Assembly Material</b>	Carbon Steel, ASTM A108
<b>O-Ring Material</b>	Viton® Fluorocarbon Type 1, Class 2 (90 durometer)
<b>Connection 1 Type</b>	Female Tube Socket
<b>Connection 1 Size</b>	5/8" Tube O.D. (-10)
<b>Connection 2 Type</b>	Female Tube Socket
<b>Connection 2 Size</b>	5/8" Tube O.D. (-10)
<b>Connection 3 Type</b>	Female Tube Socket
<b>Connection 3 Size</b>	1/2" Tube O.D. (-08)