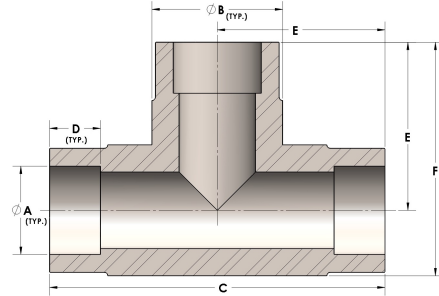


Product Category

H830-08-CUNI

Part Description

Direct Socketweld/Braze Tee (Tube)



## DIMENSIONS

|   |       |
|---|-------|
| A | 0.500 |
| B | 0.75  |
| C | 2.13  |
| D | 0.310 |
| E | 1.06  |
| F | 1.44  |

## GENERAL

|                  |  |
|------------------|--|
| Pressure Rating  | 3000 PSI                                       |
| Fitting Material | Copper Nickel 70/30, MIL-C--15726F, UNS C71500 |