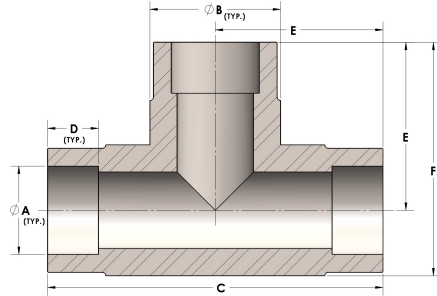


Product Category

H830-10-CUNI

Part Description

Direct Socketweld/Braze Tee (Tube)



## DIMENSIONS

A	0.630
B	0.88
C	2.38
D	0.380
E	1.19
F	1.63

## GENERAL

Pressure Rating	3000 PSI
Fitting Material	Copper Nickel 70/30, MIL-C--15726F, UNS C71500