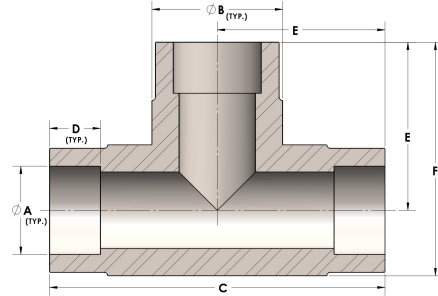


Product Category

H830-16-CUNI

Part Description

Direct Socketweld/Braze Tee (Tube)



## DIMENSIONS

A	1.000
B	1.38
C	3.13
D	0.500
E	1.56
F	2.25

## GENERAL

Pressure Rating	3000 PSI
Fitting Material	Copper Nickel 70/30, MIL-C--15726F, UNS C71500