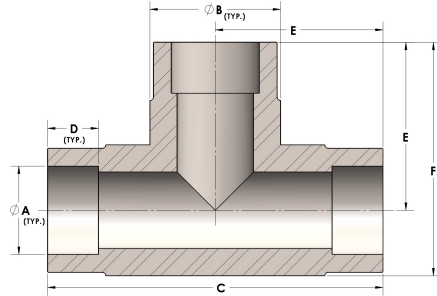


Product Category

H830-20-M

Part Description

Direct Socketweld/Braze Tee (Tube)



DIMENSIONS

| | |
|---|-------|
| A | 1.250 |
| B | 1.63 |
| C | 3.88 |
| D | 0.560 |
| E | 1.94 |
| F | 2.75 |

GENERAL

| | |
|------------------|-------------------------------|
| Pressure Rating | 4500 PSI |
| Fitting Material | Monel®, ASTM B164, UNS N04405 |