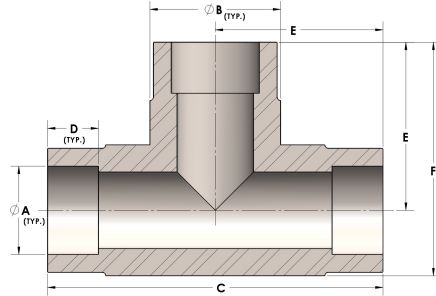


Product Category

H830-20-SS316L

Part Description

Direct Socketweld/Braze Tee (Tube)



DIMENSIONS

A	1.250
B	1.63
C	3.88
D	0.560
E	1.94
F	2.75

GENERAL

Pressure Rating	3000 PSI
Fitting Material	316/L Stainless Steel, ASTM A276, UNS S31600/03