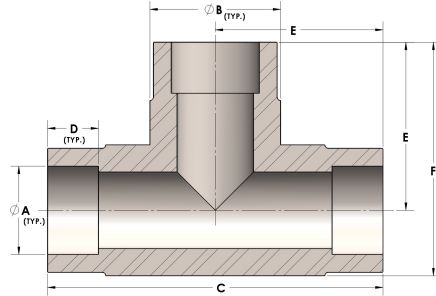


Product Category

H830-32-SS316L

Part Description

Direct Socketweld/Braze Tee (Tube)



## DIMENSIONS

A	2.000
B	2.75
C	5.75
D	0.880
E	2.88
F	4.25

## GENERAL

Pressure Rating	4500 PSI
Fitting Material	316/L Stainless Steel, ASTM A276, UNS S31600/03