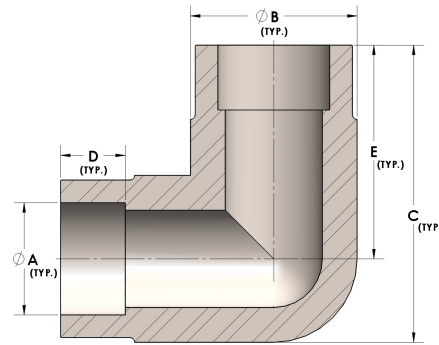


Product Category

H840-20-SS316L

Part Description

Direct Socketweld/Braze 90° Elbow (Tube)



DIMENSIONS

A	1.250
B	1.63
C	2.75
D	0.560
E	1.94

GENERAL

Pressure Rating	3000 PSI
Fitting Material	316/L Stainless Steel, ASTM A276, UNS S31600/03