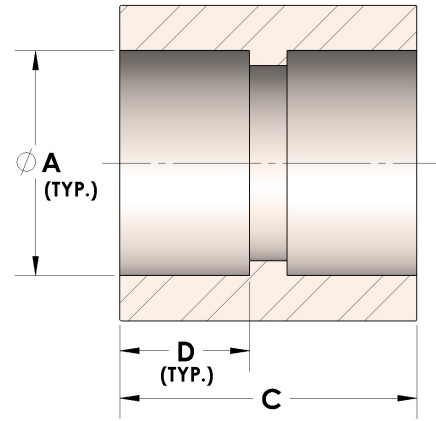


Product Category

H847-12-SS316L

Part Description

Direct Socketweld/Braze Coupling (Tube)



DIMENSIONS

| | |
|---|-------|
| A | 0.750 |
| C | 1.00 |
| D | 0.440 |

GENERAL

| | |
|------------------|---|
| Pressure Rating | 6000 PSI |
| Fitting Material | 316/L Stainless Steel, ASTM A276, UNS S31600/03 |