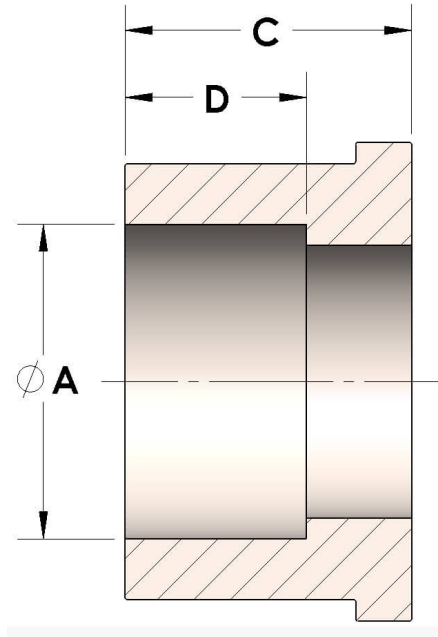


Product Category

H849R-12-SS316L

Part Description

Socketweld/braze Tube Tailpiece



DIMENSIONS

| | |
|---|-------|
| A | 0.750 |
| C | 0.69 |
| D | 0.440 |

GENERAL

| | |
|--------------------|---|
| Pressure Rating | 6000 PSI |
| Tailpiece Material | 316/L Stainless Steel, ASTM A276, UNS S31600/03 |