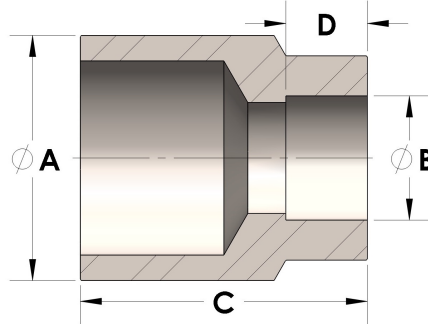


Product Category

H867-32-08-SS316L

Part Description

Direct Weld/Braze Insert (Male Tube X Tube SW)



DIMENSIONS

A	2.000
B	0.50
C	1.75
D	0.310

GENERAL

Pressure Rating	4500 PSI
Fitting Material	316/L Stainless Steel, ASTM A276, UNS S31600/03