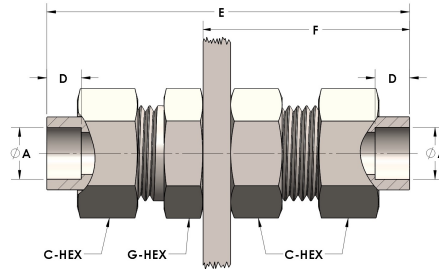


Product Category

H890-06-SS316L

Part Description

Socketweld/braze Tube Bulkhead Union Assembly



DIMENSIONS

| | |
|-----------------|-------|
| A | 0.380 |
| C-HEX | 0.81 |
| D | 0.250 |
| E | 2.63 |
| F | 1.50 |
| G-HEX | 0.75 |
| PANEL BORE DIA. | 0.72 |

GENERAL

| | |
|-------------------|--|
| Pressure Rating | 6000 PSI |
| Assembly Material | 316/L Stainless Steel, ASTM A276, UNS S31600/03 |
| O-Ring Material | Viton® Fluorocarbon Type 1, Class 2 (90 durometer) |
| Connection 1 Type | Female Tube Socket |
| Connection 1 Size | 3/8" Tube O.D. (-06) |
| Connection 2 Type | Female Tube Socket |
| Connection 2 Size | 3/8" Tube O.D. (-06) |