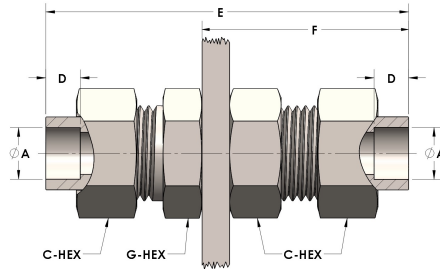


Product Category

H890-12-SS316L

Part Description

Socketweld/braze Tube Bulkhead Union Assembly



## DIMENSIONS

A	0.750
C-HEX	1.38
D	0.440
E	3.63
F	2.00
G-HEX	1.38
PANEL BORE DIA.	1.28

## GENERAL

Pressure Rating	6000 PSI
Assembly Material	316/L Stainless Steel, ASTM A276, UNS S31600/03
O-Ring Material	Viton® Fluorocarbon Type 1, Class 2 (90 durometer)
Connection 1 Type	Female Tube Socket
Connection 1 Size	3/4" Tube O.D. (-12)
Connection 2 Type	Female Tube Socket
Connection 2 Size	3/4" Tube O.D. (-12)