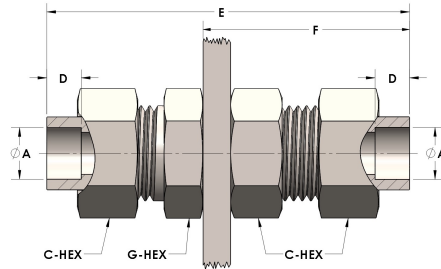


Product Category

H890-20-SS316L

Part Description

Socketweld/braze Tube Bulkhead Union Assembly



DIMENSIONS

A	1.250
C-HEX	2
D	0.560
E	4.13
F	2.25
G-HEX	1.88
PANEL BORE DIA.	1.78

GENERAL

Pressure Rating	3000 PSI
Assembly Material	316/L Stainless Steel, ASTM A276, UNS S31600/03
O-Ring Material	Viton® Fluorocarbon Type 1, Class 2 (90 durometer)
Connection 1 Type	Female Tube Socket
Connection 1 Size	1.25" Tube O.D. (-20)
Connection 2 Type	Female Tube Socket
Connection 2 Size	1.25" Tube O.D. (-20)