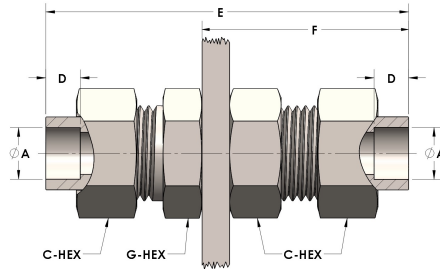


Product Category

H890-24-M

Part Description

Socketweld/braze Tube Bulkhead Union Assembly



DIMENSIONS

A	1.500
C-HEX	2.38
D	0.630
E	4.38
F	2.38
G-HEX	2.25
PANEL BORE DIA.	2.19

GENERAL

Pressure Rating	4500 PSI
Assembly Material	Monel®, ASTM B164, UNS N04405
O-Ring Material	Viton® Fluorocarbon Type 1, Class 2 (90 durometer)
Connection 1 Type	Female Tube Socket
Connection 1 Size	1.50" Tube O.D. (-24)
Connection 2 Type	Female Tube Socket
Connection 2 Size	1.50" Tube O.D. (-24)